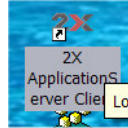




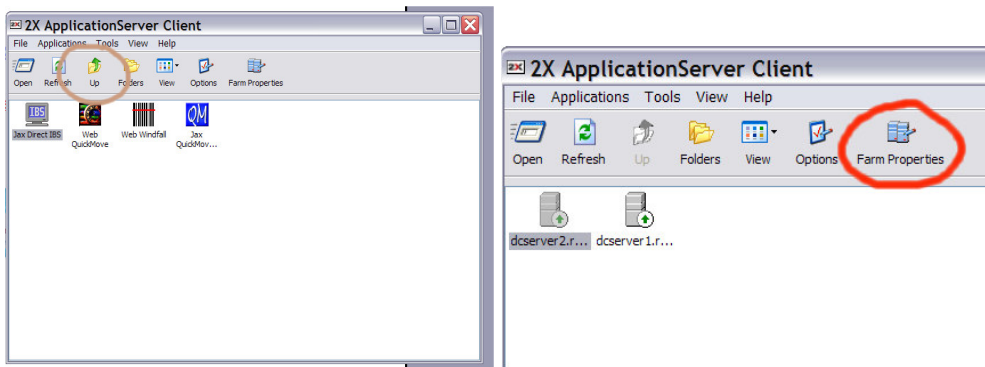
## Information Systems Management for Movers

### Entering Your Own Username and Password into the 2x Thin Client

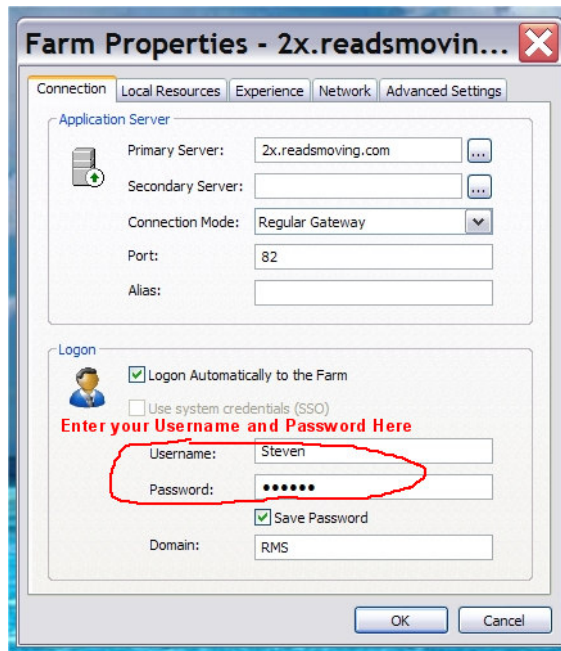
1. Obtain your username and password (Usually the same as your Windows Login).
2. Launch the 2x Icon on your desktop.



3. Once the 2x Client screen is open, select the up arrow to show the “farm” server, such as 2x.readsmoving.com or if you have only one “farm” just click on “Farm Properties”.



4. Now you can enter your username and password in the “Connections” tab of the “Farm Properties” window... (see figures below).





## Information Systems Management for Movers

### Plus additional Settings Information

